

Otosopes for Small Animals



Otoscope for Small Animals

Diagnostic otoscopy is one of the most important applications of endoscopes in veterinary medicine. Disorders of the external ear are common in dogs; the easy access and superior visualization afforded by this technique make endoscopy an ideal method of examination.

KARL STORZ now offers a veterinary otoscopy set designed for use in the awake patient as well as those under general anesthesia. The shape and adapted length make it possible to carry out thorough examinations even in dog breeds with long aural passages.

Used in combination with a KARL STORZ endoscopic camera system and a documentation system, the otoscope provides a precise means of assessment of treatment and follow-up, documentation of findings and client education.

A rigid endoscope allows examination and diagnostic sampling of the middle ear as well. Under precise visual control, a myringotomy can be performed when indicated.

The otoscope is also designed for treatment of various conditions of the external ear: cleansing the ear with flushing and suction through the channel; curettage of inflamed ears laden with debris, removal of foreign objects, polypectomy, etc.

For safe and thorough ear cleaning under constant endoscopic visualization, the VETPUMP® 2 is an excellent solution (For more information, please see ENDOWORLD® VET 26).

In addition to examination and treatment of the ear, the KARL STORZ veterinary otoscope is used to examine and document dermatologic and dental lesions.



Fig. 1:
Nasopharyngeal polyp protruding
from Eustachian tube

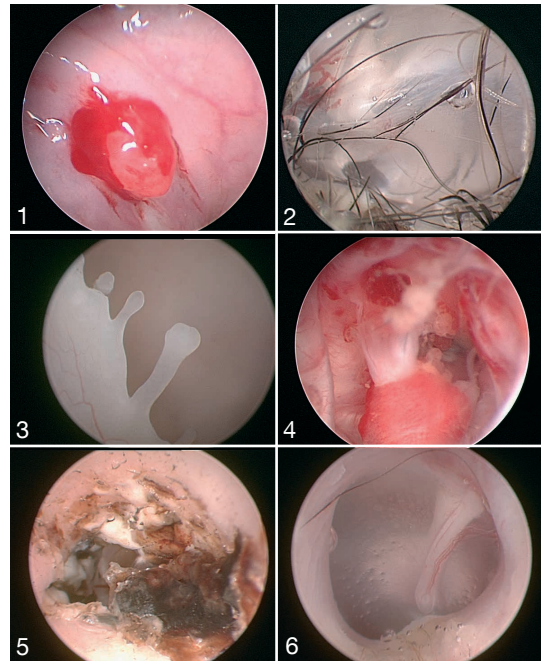
Fig. 2:
Normal tympanum

Fig. 3:
Polyps in the middle ear

Fig. 4:
Tumor in the middle ear

Fig. 5:
Otitis externa with perforated tympanum

Fig. 6:
Otoscopy, cat

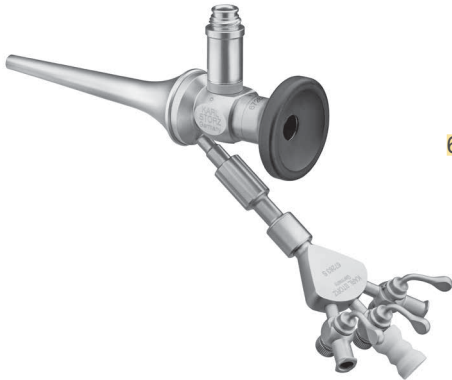


Check out our schedule of upcoming hands-on training courses at
<http://go.karlstorz.com/eventsVET>



Otoscope Set

Ideal for the examination and flushing of the external ear of awake or anesthetized patients. An integrated working channel facilitates the simultaneous use of flexible instruments.



67260OSA

Veterinary Otoscope Set

including:

Otoscope, for dogs and cats, **autoclavable**, diameter 5 mm, length 8.5 cm, with integrated working channel 5 Fr. in diameter

3-way Stopcock, for simultaneous use of instruments and irrigation or suction

Optional Accessories



67262S

2-way Stopcock, for simultaneous use of instruments and irrigation or suction

15006D

“ULTRA STOP” Antifog Solution, 15 ml, atomizer bottle

15006C

Same, 30 ml, sterile, pierce bottle

27650C

Cleaning Brush, round, rigid, outer diameter 2.5 mm, for working channel diameter 2 – 2.4 mm, length 35 cm

Diagnostic Otoscope

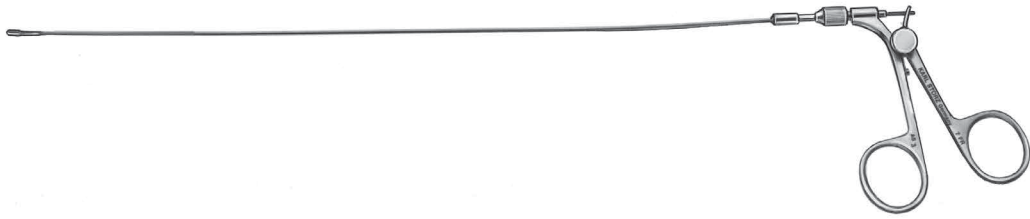
Designed for the examination of inflamed ears or small animals. The small diameter of the diagnostic otoscope makes it suitable for use on awake animals.



1215AA

Tele-Otoscope, with HOPKINS® straight forward telescope 0°, diameter 4 mm, length 6 cm, **autoclavable**, fiber optic light transmission incorporated, color code: green

Instruments for use with the Otoscope Set



67161Z

Biopsy Forceps, flexible, oval, double action jaws, 5 Fr., length 34 cm



67161T

Grasping Forceps, flexible, oval, double action jaws, 5 Fr., length 34 cm



67159L

Polypectomy Snare, 5 Fr., length 32 cm including:
Handle
Tube
Snare
Adaptor



67071XS

Myringotomy Needle, with outer tube including:
Flexible Needle, outer diameter 0.7 mm
Outer Tube, outer diameter 1.5 mm



67261K

Ear Curette, small, 5 Fr., length 30 cm



67261KL

Ear Curette, large, for insertion in the working channel from the distal end, length 30 cm



62992

OTEX® Brush, 5 Fr., bristle diameter 5 mm, length 19 cm



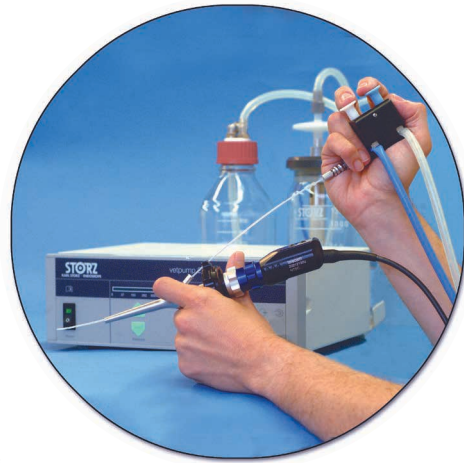
62993

OTEX® Brush, 5 Fr., bristle diameter 7 mm, length 19 cm

Flushing and Suction for Deep Ear Cleaning

The VETPUMP® 2 suction and irrigation device makes cleaning ears easier than ever before.

More powerful, more precise and safer than other units, the VETPUMP® 2 is the ultimate device for lavage and suction during otoscopy, gastroscopy, laparoscopy and more.



69321601

VETPUMP® VETPUMP® 2, adjustable suction and irrigation pump, power supply 100/120/230/240 VAC, 50/60 Hz including:

Mains Cord

Mains Cord, US version

Suction Bottle, 1.5 l, sterilizable

Bottle Cap, for Suction Bottle

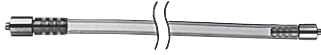
Bottle Holder, for Suction Bottle

Irrigation Bottle

Bottle Cap, for Irrigation Bottle

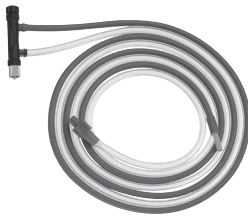
Bottle Holder, for Irrigation Bottle

Accessories for Otoscopy



69320033

Silicone Tubing Set, irrigation-suction from unit to bottles, **autoclavable**, for use with VETPUMP® 2 and Otoscope



69811

Instrument Tubing Set, **autoclavable**, connects bottles to Handle 69810, for use with VETPUMP® 2



69810

Handle, for irrigation and suction, **autoclavable**, for use with Tubing Set 69811, in conjunction with 5 mm suction and irrigation tubes and catheters any size with LUER-Lock connection

More than
75
Years

*Shaping the Future
of Endoscopy with you*

STORZ
KARL STORZ—ENDOSKOPE

THE DIAMOND STANDARD

KARL STORZ SE & Co. KG
Dr.-Karl-Storz-Straße 34, 78532 Tuttlingen/Germany
Postbox 230, 78503 Tuttlingen/Germany
Phone: +49 7461 708-0
Fax: +49 7461 708-105
E-Mail: vet@karlstorz.com

www.karlstorz.com

